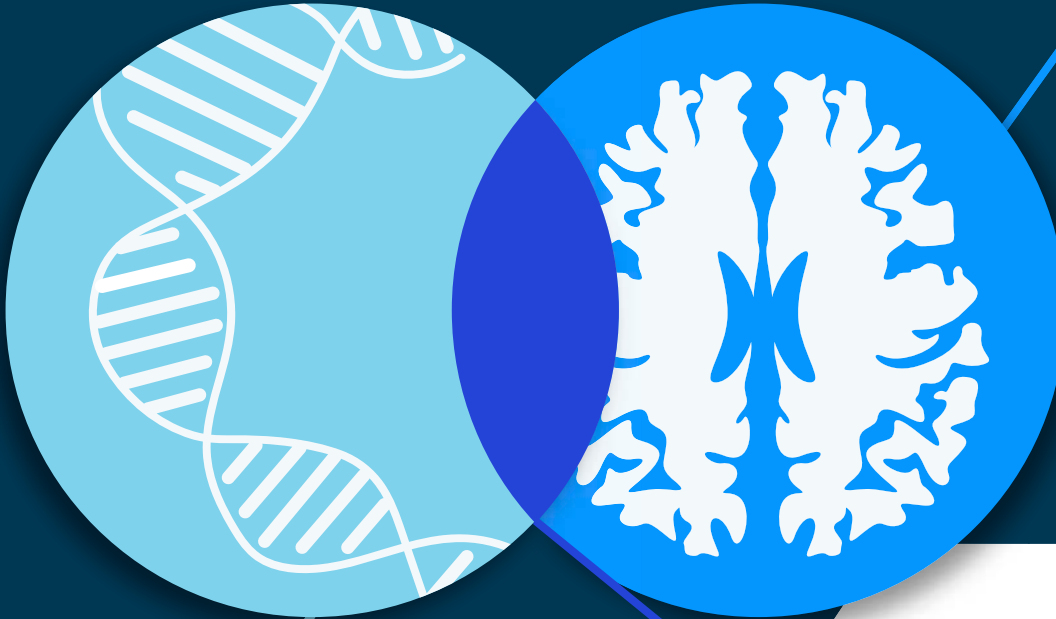




Novel Genetic Finding May Explain White Matter Hyperintensity Burden in Parkinson's Disease (PD)



NEUROIMAGING

White matter hyperintensity may indicate injury to the brain's blood vessels, resulting in loss of cognition over time

GENOMICS

NOTCH3 gene variants can cause migraines, strokes & other conditions related to small vessel dysfunctions in the brain

ONDRI: team science come alive

Researchers from both disciplines studying the same ONDRI PD patients found:

~ 10% of PD patients had **NOTCH3** gene variants

Twice the amount of white matter hyperintensity than expected*

The contribution of **NOTCH3** variants to PD has not been previously described and requires focused investigation

Bringing genetics & neuroimaging expertise together is a result of ONDRI's cross-platform design, leading to novel, innovative discoveries

* For those patients with **NOTCH3** gene variants